

MIRUC



# CHIP SURFACE INSPECTION DEVICE BY RACK & PINION TYPE STAGE



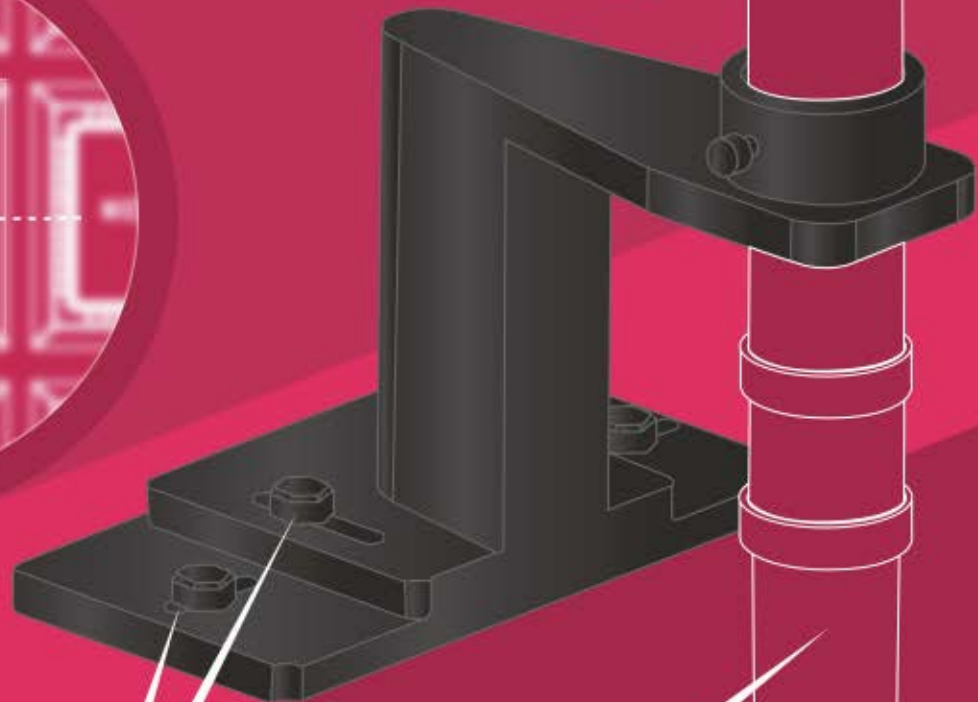
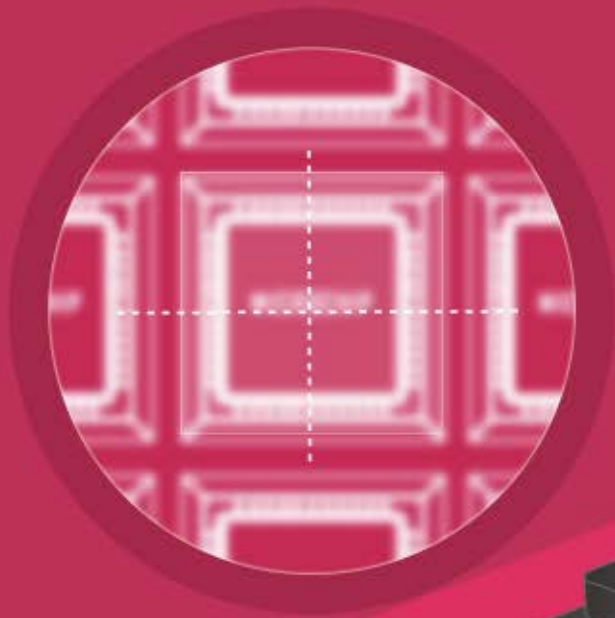
TIME SAVER



CUSTOMIZABLE



# FOCUS ADJUSTMENT OF ZOOM LENS TAKES A LOT OF TIME!



FOCUS ADJUSTMENT BY  
X,Y (4 BOLTS) AND Z(2 BOLTS)

ZOOM LENS

TRAY WITH CHIP

## FOCUS ADJUSTMENT FACTORS

IT IS NECESSARY TO ADJUST THE ZOOM LENS WHEN THE CHIP AND TRAY IS CHANGED.



CHIP AND TRAY  
CHANGE

=



XY BOLT  
ADJUSTMENT

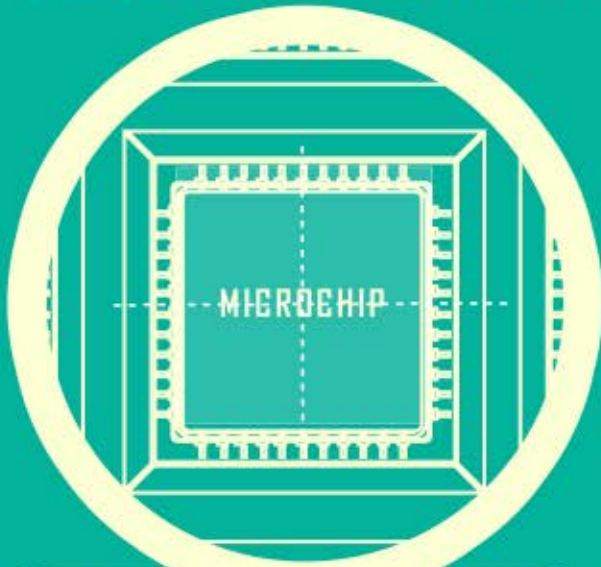
+



Z BOLT HEIGHT  
ADJUSTMENT

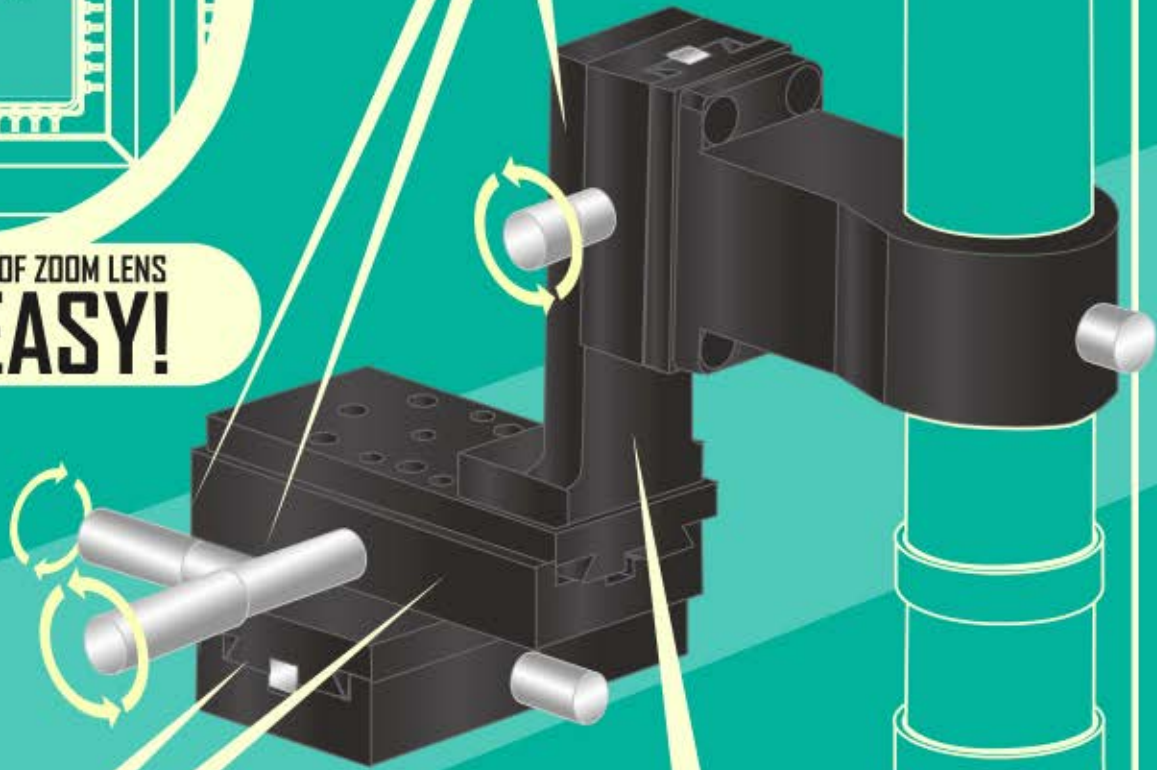
ADJUSTMENTS ARE DONE BY LOOSENING AND TIGHTENING THE BOLTS  
THIS OPERATION IS SO TIME CONSUMING!

# SOLUTION! CONFIGURE A COMBINATION OF RACK AND PINION TYPE STAGE TO 3 AXIS



FOCUS ADJUSTMENT OF ZOOM LENS  
**MADE EASY!**

**JUST TURN THE HANDLES,  
LOCK AND IT IS DONE!**



**80 MM STAGE 2  
COMBINATIONS**

**50MM Z AXIS STAGE**

## ADJUSTMENT IMPROVEMENTS



LOOSENING &  
TIGHTENING BOLTS  
**REMOVED**



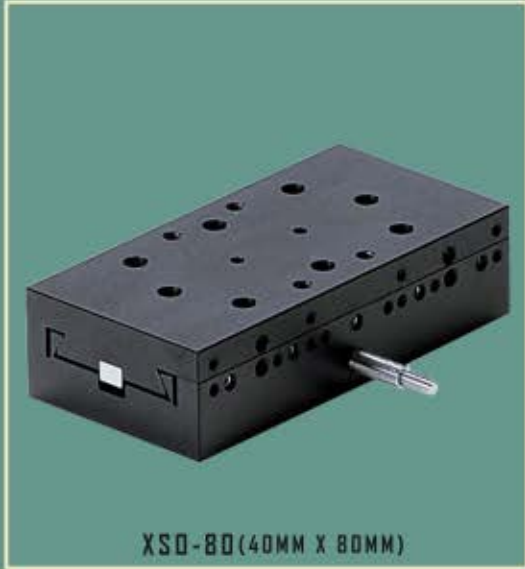
WORKING TIME  
**REDUCED**



POSITIONING AND FOCUSING  
**EASY**

THE NECESSARY OPERATION BEFORE WHICH IS FIXING AND REMOVING OF THE SIX BOLTS IN THE THREE AXIS BECAME UNNECESSARY, NOW WORKING TIME IS SIGNIFICANTLY REDUCED.

# THIN TYPE RACK & PINION TYPE STAGE (XSD-80/ZSD-50)



XSD-80 (40MM X 80MM)



ZSD-50 (30MM X 50MM)

## FEATURES



THIN TYPE



SMOOTH SLIDING



HIGH QUALITY



HIGH DURABILITY



ALUMINUM  
ALLOY BODY



HANDLE SHAPE, SCALE PLATE, STOPPER SHAPE AND Z AXIS BRACKET CAN BE FREELY SELECTED