

Tip Shape
Inspection Jig
with Rotary Stage
and X-Axis Stage



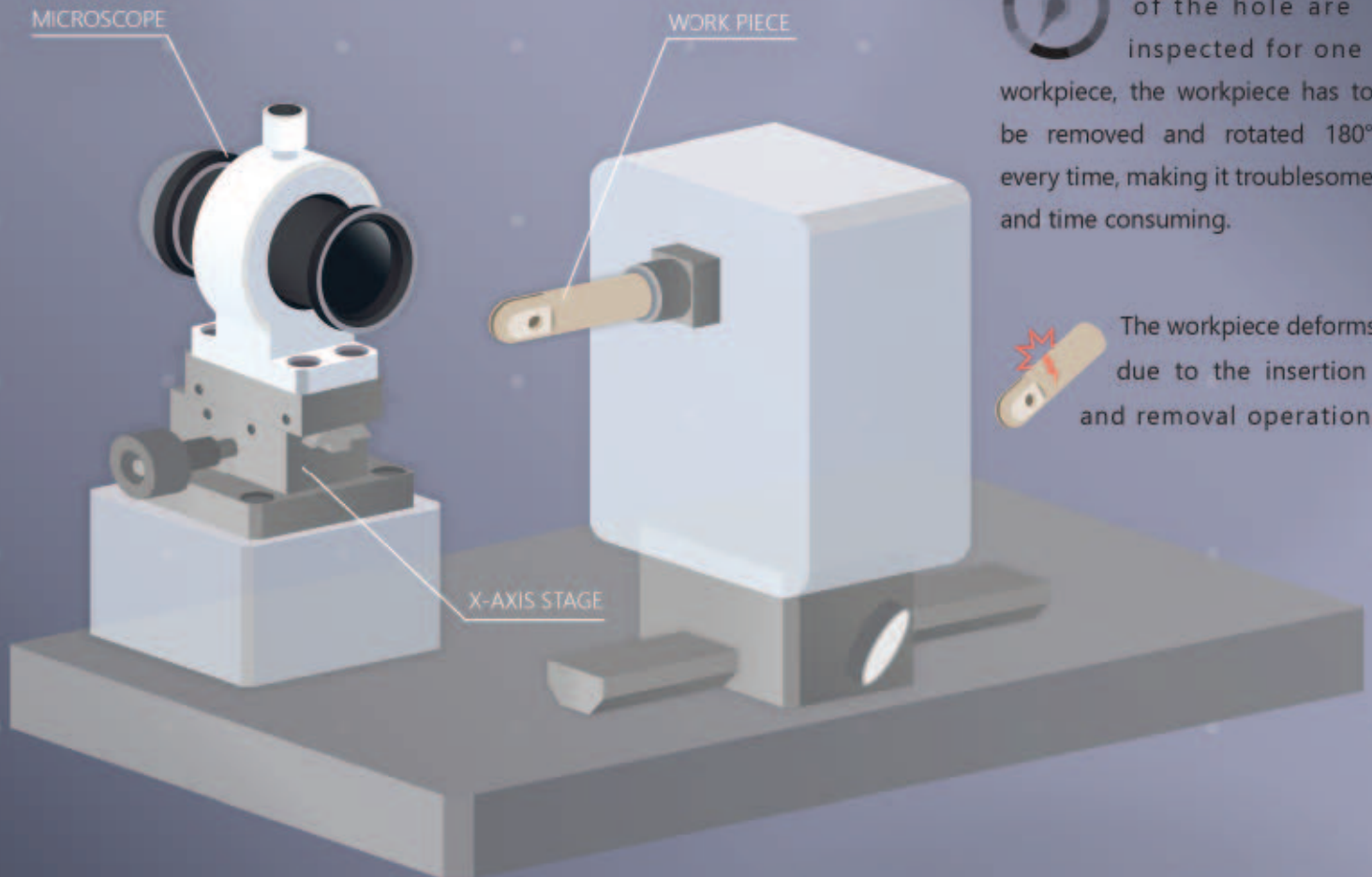
TIME
SAVER



PROCESS
IMPROVEMENT



To inspect both sides of the hole, the workpiece is inserted, removed, and inverted by hand every time. The omission of inspection of one side and deformity due to the insertion and removal are problems.



The inlet and the outlet of the hole are inspected for one workpiece, the workpiece has to be removed and rotated 180° every time, making it troublesome and time consuming.

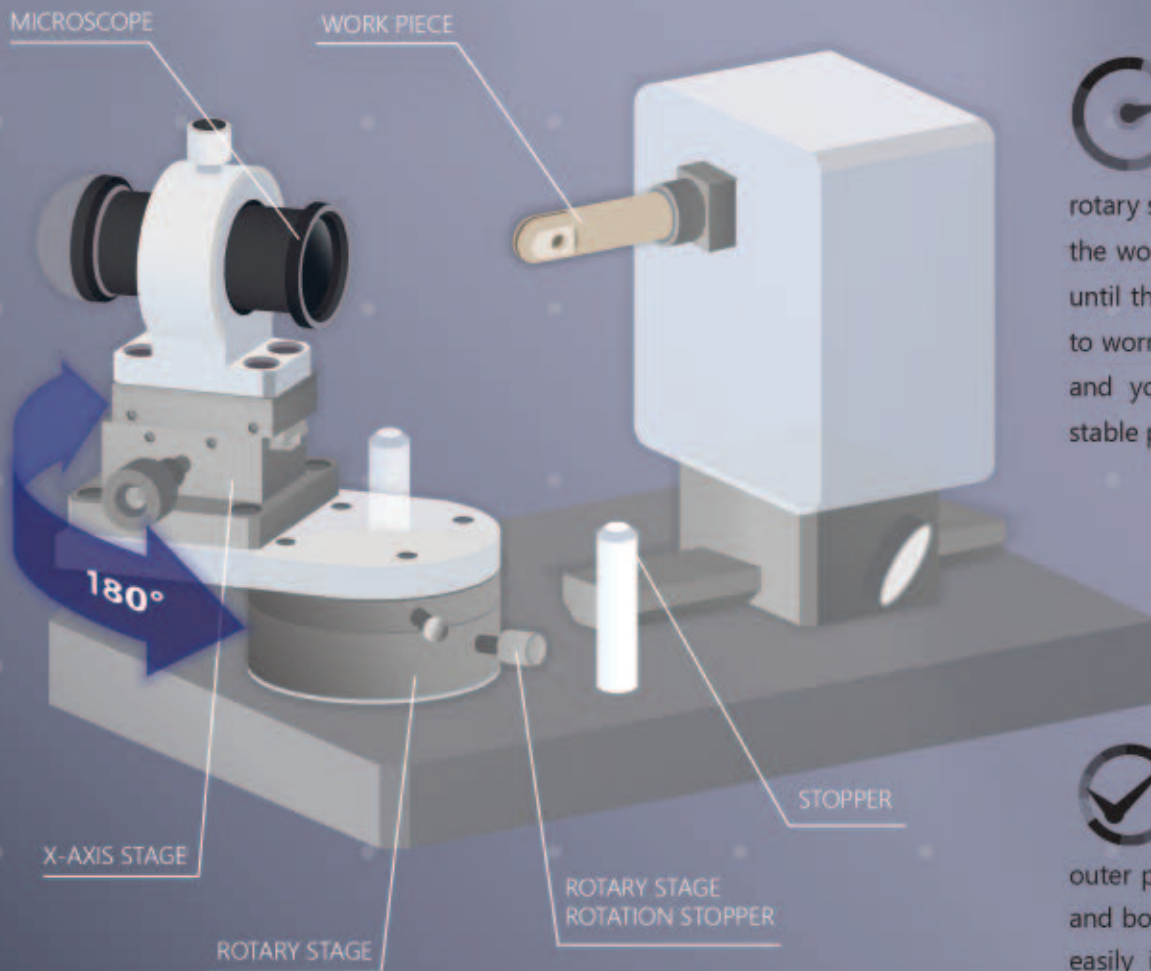
The workpiece deforms due to the insertion and removal operation.

Operators working for a long time become confused on which side of the workpiece should they be inspecting and which side has already been inspected. This sometimes leads to one side of the workpiece being left unscrutinized.





Using the Rotary Stage with the X-Axis Stage eliminates inspection omissions, improving workability and quality.



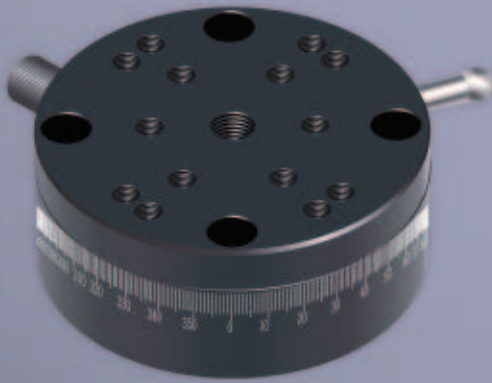
The rotation angle is fixed beforehand at the stopper of the rotary stage, that's why it's okay if the worker only rotates the stage until the terminal. You don't have to worry about the rotation angle and you can inspect it from a stable position.



The microscope on the rotary stage smoothly rotates 180° around the outer periphery of the workpiece, and both sides of the hole can be easily inspected. It is no longer necessary to insert, remove and change the facing of the workpiece.

The problem of inspection omission of one side of the hole has ceased to occur because the side being inspected has become obvious through the position of the microscope on the rotary stage. This removes the removing-inverting-inserting process which has broken many workpieces as well as greatly increasing productivity efficiency.





CHARACTERISTICS OF THE ROTARY STAGE (KTS-60)



ROTATES 360°
BY HAND



LOAD CAPACITY:
68.60 N



STAGE SURFACE
KTS-60: $\varnothing 60$ MM
KTS-40: $\varnothing 40$ MM



ECCENTRICITY QUANTITY:
0.05 MM



MATERIAL:
ALUMINUM ALLOY



SURFACE TREATMENT:
SATIN BLACK & ANODIZED



OWN WEIGHT:
0.2KG



ACCESSORIES:
M4 (8MM) HEX BOLT
4PCS.

Points to Follow During Application:

This is suitable when you want to change the facing of the sensor, camera, workpiece, etc.

On the fixed side of the rotary stage, a scale (minimum reading 1°) is engraved, that's why it is possible to check the approximate rotation angle. (The minimum reading of stage surface size $\varnothing 40$ mm, KTS-40 is 2°).

In addition, please use the stopper, which is standard equipment, depending on the intended use. You can fix the rotating part of the rotary stage to the position that you like.

