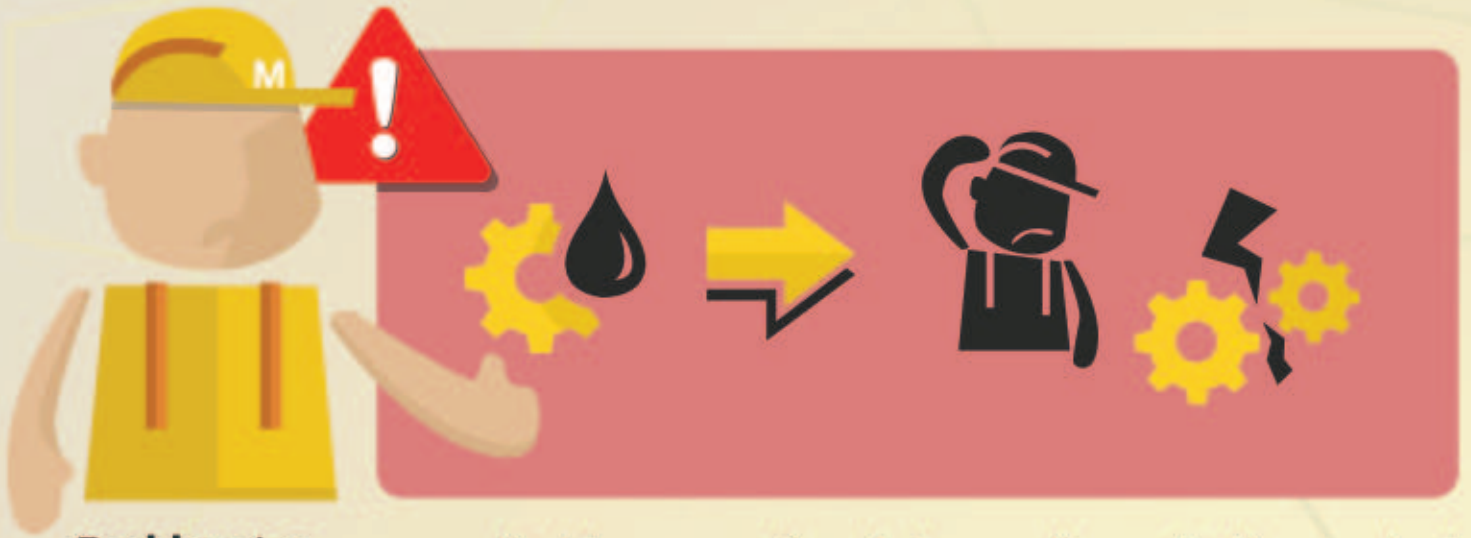


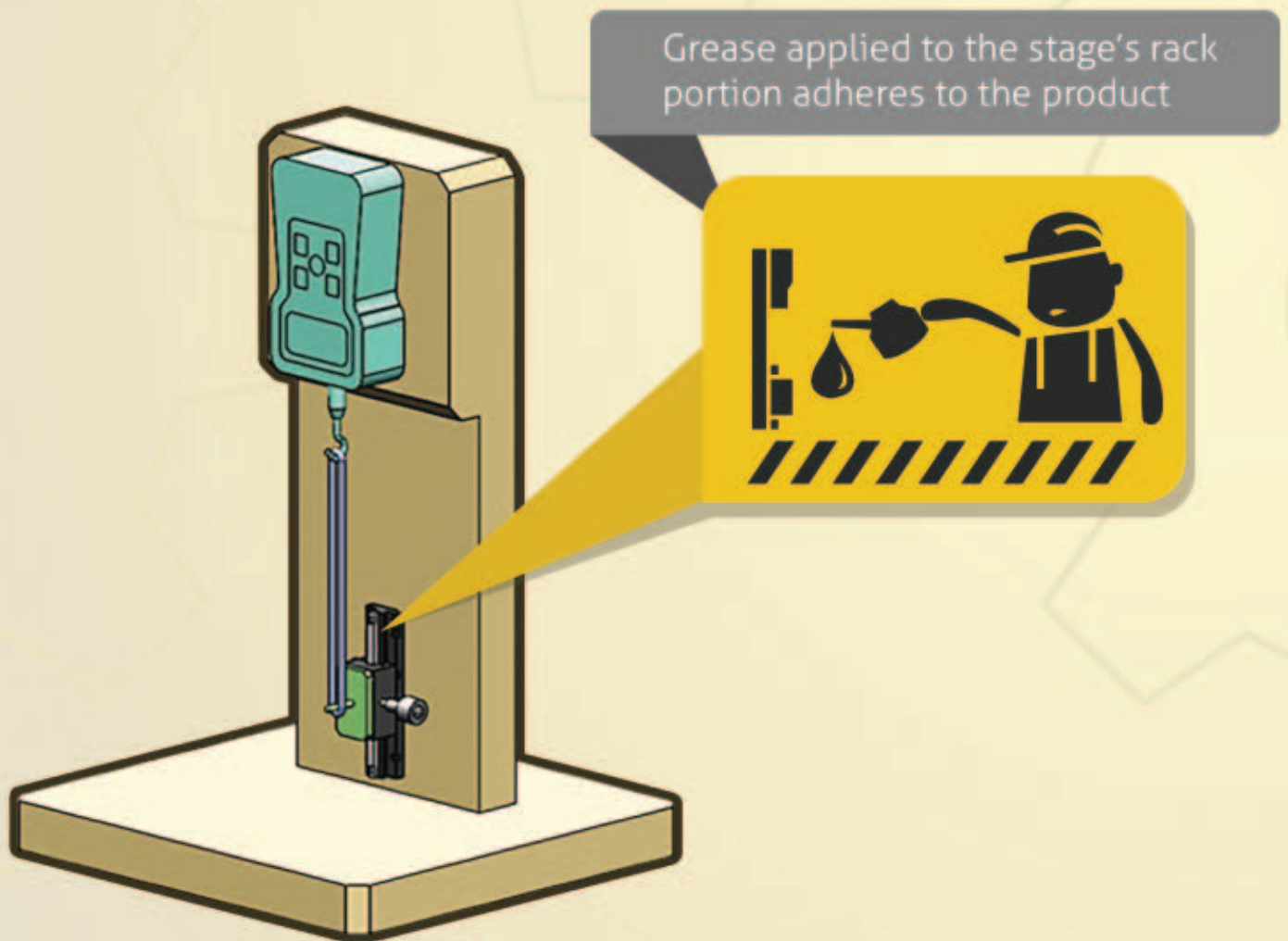


# ***RUBBER BAND INSPECTION JIG OPTIMIZATION***



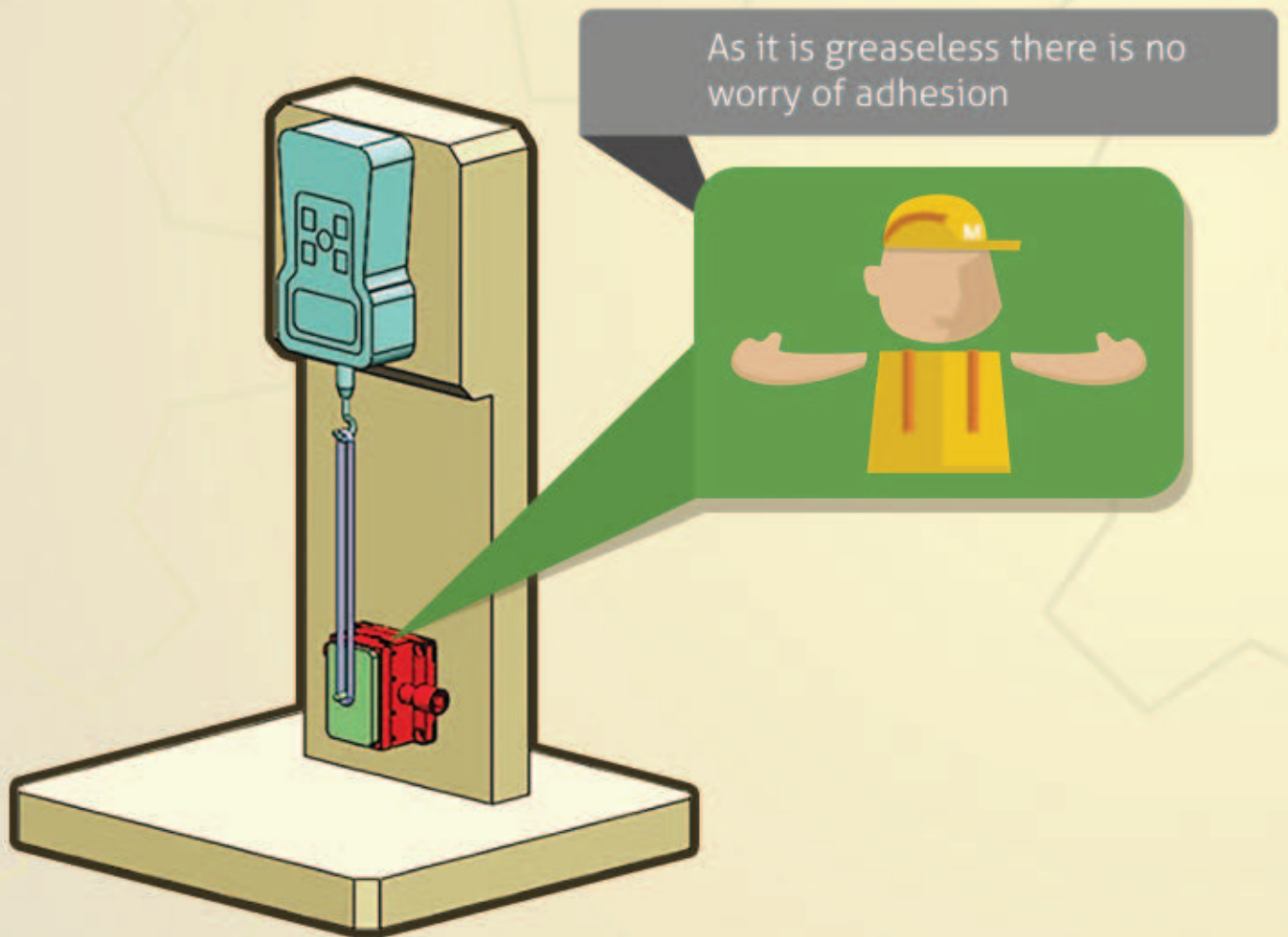


**Problem** | Grease applied to conventional stage adheres to the product during testing, causing customer complaints.

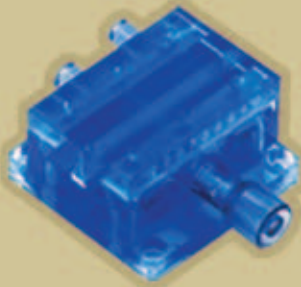




**Solutions** | Greaseless Stage made from HIGH QUALITY  
| Japanese resins



# SKELETON STAGE FEATURES



SK-60B



SK-60R



SK-60Y



SK-60C



STAGE SURFACE  
40x60mm



GREASELESS  
and maintenance-free



LIGHTWEIGHT  
0.11 kg (1/2 the weight of  
aluminum)



STAGE BODY  
PMMA - Polymethyl  
Methacrylate (acrylic)



DEGREE OF  
MOVEMENT  
± 21mm



MINIMUM  
SCALE READING  
0.1mm



MOVEMENT PER  
HANDLE ROTATION  
18mm



LOAD CAPACITY  
16.9N (2.0kgf)

APPLICATION POINTS : THIS PRODUCT HAS THE FOLLOWING FEATURES NOT FOUND IN TRADITIONAL ALUMINUM STAGES.



ALL RESIN PARTS TOTALLY  
UNAFFECTED BY RUST



DOES NOT HAVE A MAGNET  
CONDUCTIVE SURFACE



WEATHERPROOF, CAN BE USED  
OUTDOORS OR IN WATER