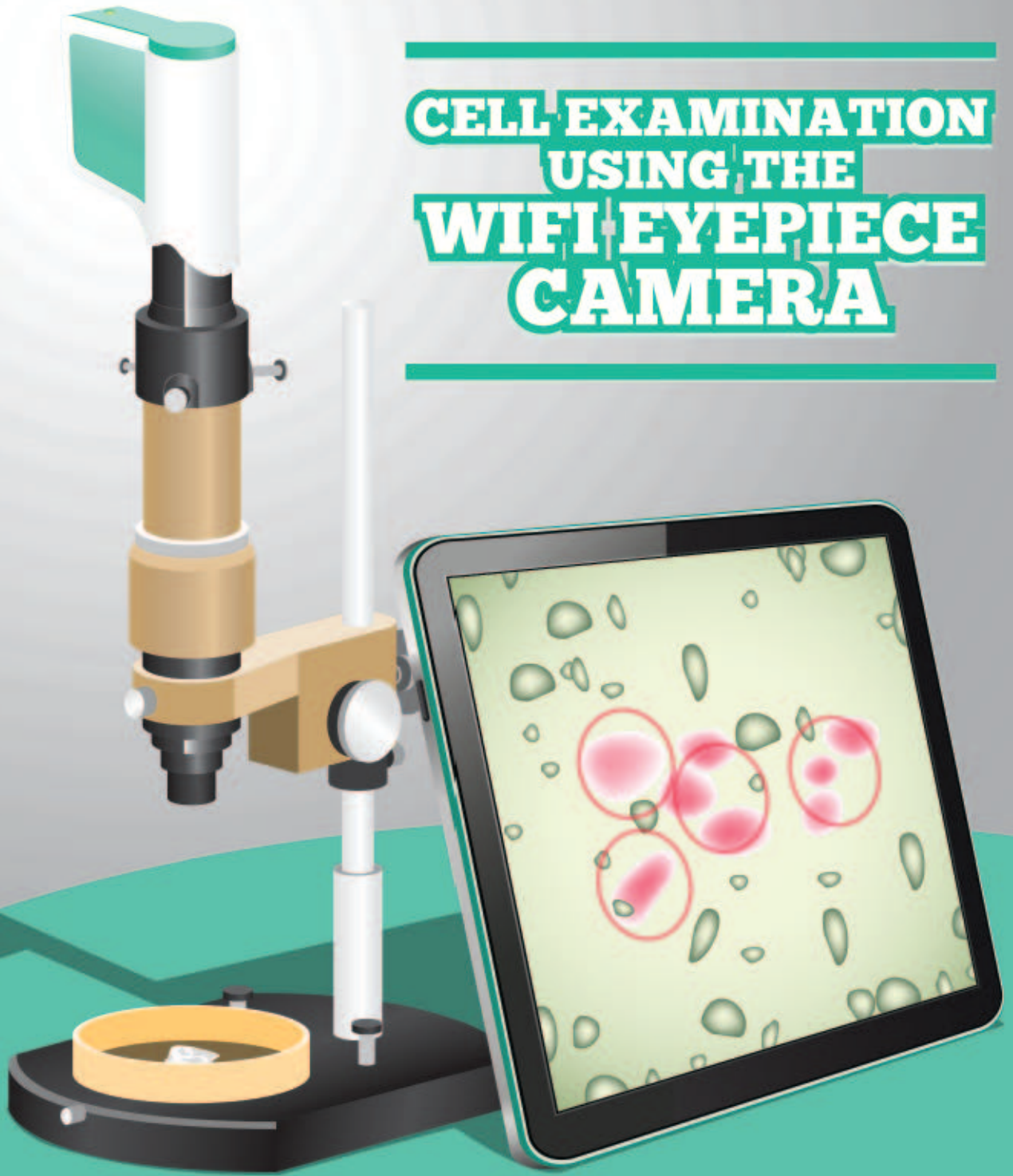


**CELL EXAMINATION
USING THE
WIFI EYEPIECE
CAMERA**



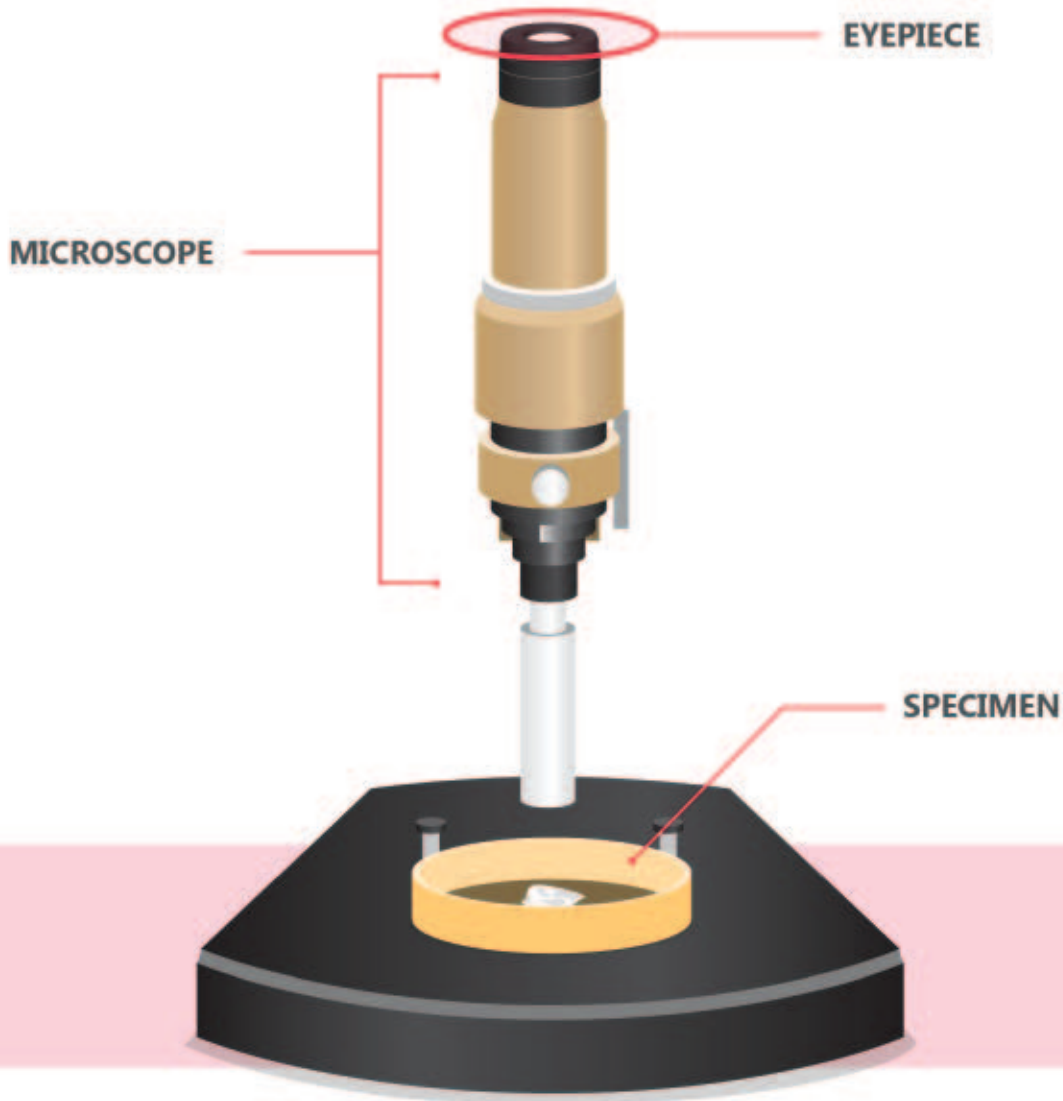
**TIME
SAVER**



**PROCESS
IMPROVEMENT**



ONLY ONE PERSON CAN OBSERVE THE SPECIMEN FROM THE MICROSCOPE'S EYEPIECE WHICH MAKES THE SPECIMEN DIFFICULT TO EXPLAIN TO CLIENTS.



Difficulty in explaining the details of the specimen to client may occur due to the lack of a visual representation.



Taking the Specimen's picture and printing it from the PC would take a lot of time and resources.

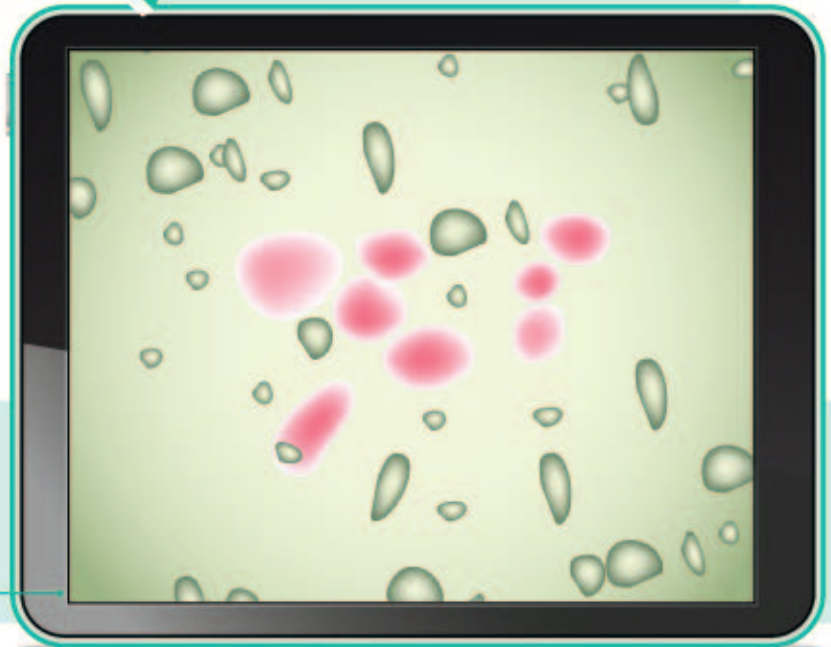


THE WIFI EYEPIECE CAMERA ENABLES MANY PEOPLE TO OBSERVE IMAGES PROJECTED BY THE MICROSCOPE TO THE SMARTPHONE / TABLET.

WIFI EYEPIECE CAMERA



TABLET



The Specimen can now be viewed by 2 or more persons on a handheld tablet or on a smartphone.



Explaining the details of the Specimen to the client is now possible and very easy with the use of a tablet.



Connecting the Wifi Eyepiece Camera to the Microscope is very easy. The same goes with the handheld tablet.

WIFI EYEPIECE CAMERA



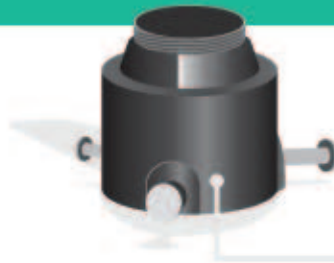
Digital imaging produces clear and detailed visuals with **Automatic White Balance Gain Control and Exposure**



**IEEE802.11b/g/n
Wireless Connection**
within 10 meters with a
2.4GHz Frequency Band



$\frac{1}{4}$ inch camera CMOS
sensor producing a
640 x 480 pixel VGA



C Mount allows easy
attachment to different
types microscopes.
(Only for MV-2015 models)



The Wifi Eyepiece Camera
uses **3 AA batteries**



Weighs 150g
(Battery excluded)